

# ULTRAF-PRO



ULTRAF-PRO is an Ultrasonic Hydrometer for Agriculture



## Time for precise irrigation

- The perfect combination: ultrasonic water meter and hydraulic valve in one unit.
- Water meter with maximum accuracy (less than 2% deviation).
- Long battery life with the possibility of battery replacement in the field.
- **Ultraf mobile application – digital water meter communicate via smartphone.**
- Easy and compact installation, low maintenance, no moving parts in the water.

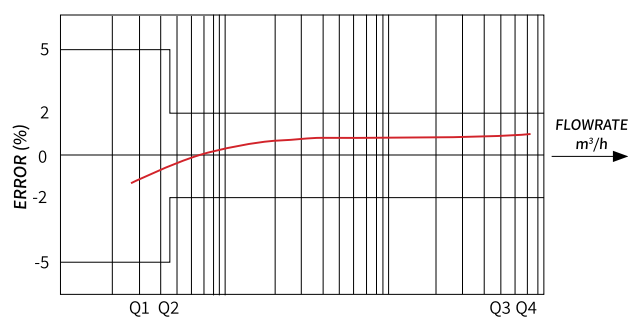
## Advantages

- Reliable and high accuracy
- No moving parts
- Bluetooth App for field programming
- Simple to install and operate
- Single compact unit, space saving
- Battery operated with extended battery life
- Minimal maintenance
- High level protection, according to IP68
- Pressure control
- Optional cards (digital and analog output)
- Low head loss

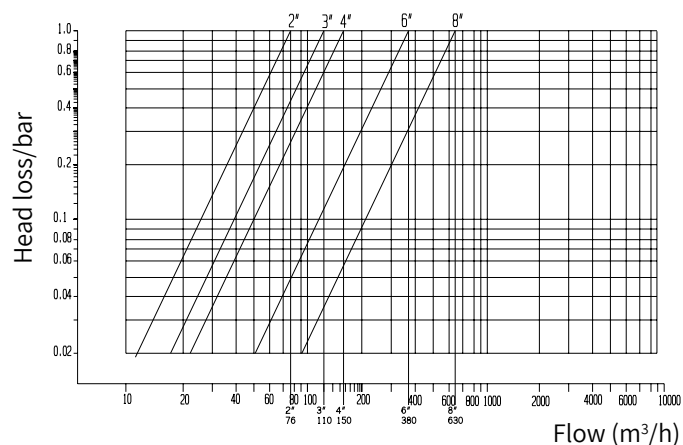
## Performance

Flow (m <sup>3</sup> /h)	2	3	4	6	8
Q1	0.32	0.50	0.80	2.00	3.20
Q2	0.51	0.81	1.28	3.20	5.12
Q3	40	63	100	250	400
Q4	50	79	125	313	500
R	125	125	125	125	125

## Accuracy



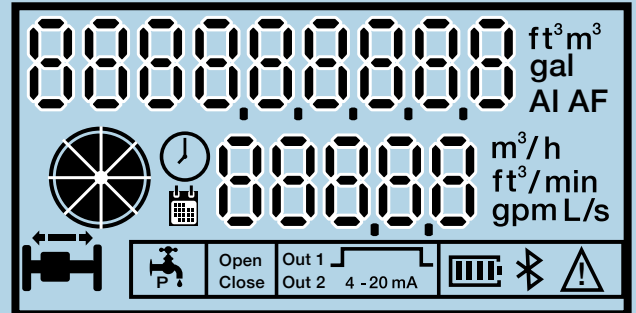
## Head Loss



## Display

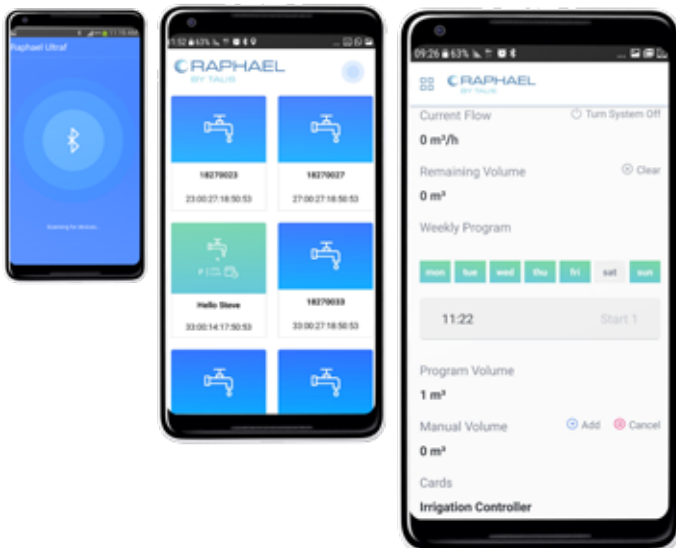
The display provides ongoing information to the operator in the field, at all times, digital display monitor and output cards.

- Information on the digital display:
  - Water flow at any given moment
  - Accumulated water volume
  - Battery status
  - Flow in the pipeline (if pipe is full)
  - Flow direction
  - Alerts
  - Connection status of electrical outputs from Ultraf Pro to external systems, and more.



## Bluetooth mobile application:

- Free User friendly mobile interface
- Remote control and view of ULTRAF data such as: Flow, volume, Alerts and more.
- Setting parameters as: flow units, pulse resolution and different models parameters
- Available for Android and IOS



## ULTRAF-PRO Different Models:

- 2 Digital pulse outputs
- Analogue 4-20 ma output
- Build in Irrigation controller:
  - Cyclic or Weekly irrigation programs
  - Irrigate by quantities or by time
  - Flow alerts and burst control

## Technical Specifications - Dimensions & Weight

DN (mm)	50	80	100	150	200
DN (inch)	2	3	4	6	8
L (mm)	260	300	350	500	600
H (mm)	270	300	320	380	420
W (mm)	190	223	420	320	370
W (kg)	10	15	23	44	67

